



# MAMBRUI SECONDARY SCHOOL EDUCATION TRUST



# MSSET PROFILE

**P.O.BOX 822 - 80200 MAMBRUI**

**Tel: + 254 722 248 338**

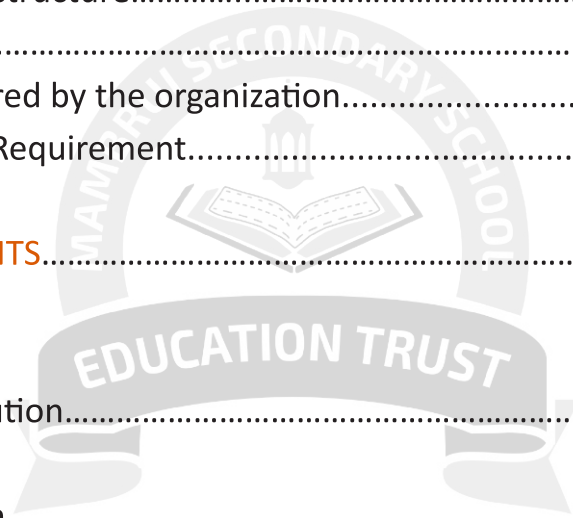
**[www.mambruisecundary.co.ke](http://www.mambruisecundary.co.ke)**

**[mambruieducationtrust@gmail.com](mailto:mambruieducationtrust@gmail.com) | [Mambruisecundaryschool@gmail.com](mailto:Mambruisecundaryschool@gmail.com)**



## TABLE OF CONTENTS

<b>1.0 INTRODUCTION</b> .....	4
1.1 Background.....	5
1.2 Organization structure.....	6
1.3 Trustees.....	6
1.4 Services offered by the organization.....	7
1.5 Registration Requirement.....	8
<b>2.0 ACHIEVEMENTS</b> .....	8
2.1 New Constitution.....	8
2.2 Strategic Plan.....	8
<b>3.0 CHALLENGES</b> .....	8
3.1 Mambroi Secondary School .....	9
3.2 Income Constraints.....	10
<b>4.0 FUTURE PLAN</b> .....	10
4.1 To BUILD Wakf/ Endowment.....	10
4.2 Acknowledgement.....	11
4.3 Collaboration.....	12
4.1 Finance Report.....	13



## 1.0 INTRODUCTION

An investment in education earns the best interest. (Bernard Frank). Therefore any impediment to the attainment to quality education is an impediment to development.



In Africa, the education sector is faced with a lot of challenges, Kenya notwithstanding. These include low transition rate from one level of education to the next one. This has been attributed to the depreciating number of academic institutions as one climbs up the ladder of education. In Kenya, the number of public secondary schools is very few; and cannot accommodate all the pupils graduating from primary school. There is rapid increase in the number of private and community secondary schools; some of them are of questionable academic standards

Mambrui Secondary School Education Trust aims at taking secondary education to the community members. The operation of the institution is, however, faced with a number of challenges such as insufficient resources to accommodate the high demand of education. Magarini Constituency, where the school is located, is ranked as one of the poorest Constituencies. Residents of the area are therefore unable to pay fees for their sons and daughters.



## FUTURE ENDOWMENT PLAN

4

## 1.2 BACKGROUND INFORMATION

Mambrui Secondary School Education Trust is located in the historical town of Mambrui, 200 meters from the beach, surrounded by sand dunes, lying on a quiet / serene, scenic site which is conducive to learning.

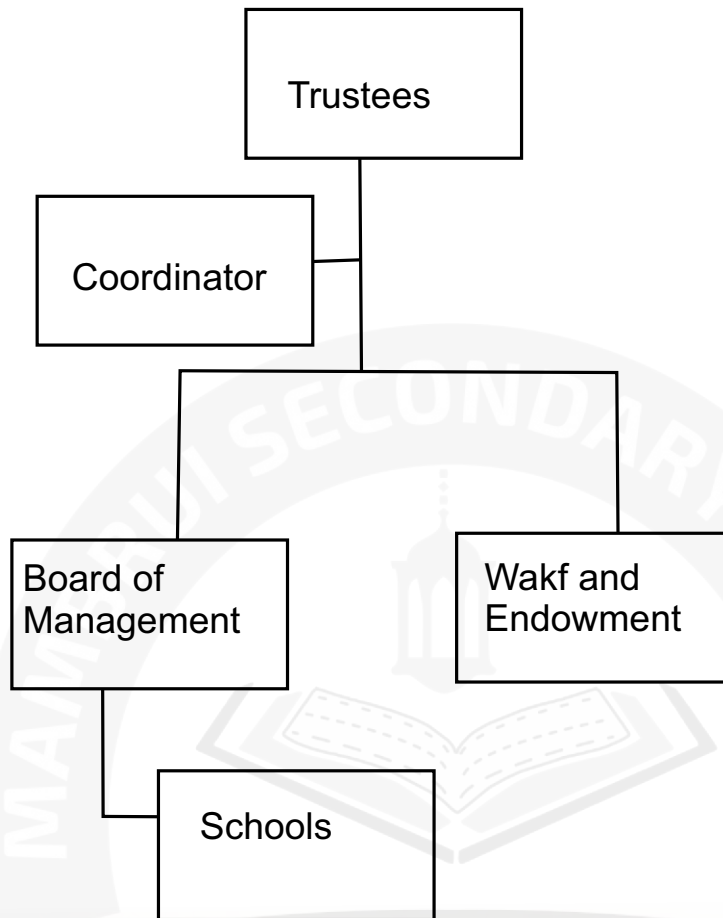
Mambrui town has an estimated population of about 5,000 people with agriculture as their main economic activity. They practice small scale farming where they grow crops such as cassava and maize mainly for subsistence purposes. They also grow fruits such as water melons which they consume and also sell the surplus. Small scale fishing is also practiced since they use canoes and dhows which cannot access the deep seas.

The main source of water for the residents of Mambrui is from bore holes this is due to the absence of piped water system in the area. As a result, water borne diseases such as cholera and diarrhea diseases are quite prevalent in the area.

Apart from subsistence agriculture and fishing, the economy of the area also depends on the tourism sector which is characterized by the existence of a number of tourist resorts in the area. This include; Karibuni villas, Angels Bay, Chechale and Robinson Island.



### 1.3 ORGANIZATION STRUCTURE



### 1.4 BOARD OF TRUSTEES

- . Mansour Said Naji
- . Omar Abdalla Salim
- . Jamal Hashim
- . Aziz Mohamed Swaleh- Co opted Member
- . Ali Mohamed
- . Attas Shariff Ali
- . Ilham Albusaid
- . Suleiman Salim Omar Bat-Heif

## 1.5 REGISTRATION REQUIREMENT

A resident of Kilifi County

Recommendation letter from Kadhi's Office or Chief office

Death Certificate of the Father if is an orphans

Birth certificate of the original

Mother's identity card

## 2.0 ACHIEVEMENTS

**Over the year the organization has been able to achieve the following Milestones;**

1. Establishment of Secondary School in 2004.
2. Mambroi Secondary School Education Trust was established by the organization in 2014.
3. The school offers secondary education system.
4. It has an enrolment of 400 students by January 2022. By 2006 the school sat its first Form Four K.C.S.E exams.
5. The school is situated In Mambroi town

## 2.1 NEW CONSTITUTION (TRUST DEED)

The organization has come up with the trust deed.

- I). Governance,
- II). Effective and efficient leadership,
- III). Integrity and accountability.

## 2.2 ORGANIZATION STRATEGIC PLAN

The organization is in plan to come up with strategic plan.

Support in developing its first strategic plan (2023-2028).

The plan would provide road map for the organization in the next three years





### 3.0 CHALLENGES

#### 3.1 MAMBRUI SECONDARY SCHOOL

- The school is a mixer school boys and girls
- Rapid growth of student population
- Separation of boys and girls
- Incorporation of Agriculture subject which were halted due to limited space.
- The need start farming t offset the high cost of food.



### 3.2 FINANCIAL CONSTRAINS

The numbers of need student who need support are more than the budget that the organization Can afford. At the moment the organization does not have a sustainable source of income to Support its activities. It mainly relies on the number of students who can supported at any given time. Current statistics shows over 1,000 deserving need student in the community.

but the organization is able to support 10 students every year. The organization therefore wishes to have sustainable source of income to run its activities

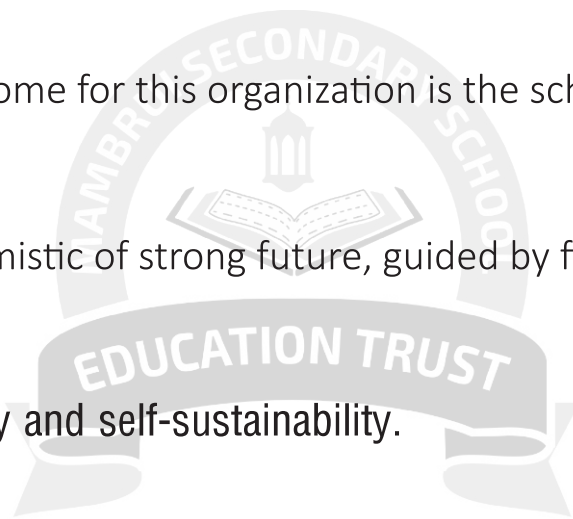
### INCOME

The main sources of income for this organization is the school fees collection.

### 4.0 FUTURE PLANS

The organization is optimistic of strong future, guided by five years strategic plan. Forecast is on

Excellent service delivery and self-sustainability.



### 4.1 WAKF AND ENDOWMENT

For sustainability purpose the organization envisages to build a Wakf.

This strategy would enable the organization to run its affaires with Little reliance from external donors.

The following are our future plan in endowment

- ❖ Land
- ❖ Two Complete Schools
- ❖ Conference Facilities
- ❖ Sports Centre
- ❖ Health Dispensary and Clinic
- ❖ Agriculture and Livestock
- ❖ Slaughter House
- ❖ Poultry House (Chicken Farming)
- ❖ Fish Farming
- ❖ Maintenance, Workshop and Yard
- ❖ Mambrui Board Cottage

**WAKF ENDOWMENT FUND  
BANK TRANSFER**



**GulfAfricanBank**

Excellence.Trust. Together.

**BANK CODE 072**

**SWIFT CODE**

**GAFRKENA**

**ACCOUNT NUMBER**

**0800096601**

**ACCOUNT NAME**

**MAMBRUI SECONDARY SCHOOL  
EDUCATION TRUST**



11

## ACKNOWLEDGEMENT

The organization wish to acknowledge the support and guidance extended to it over the year.

By well-wishers in both material and non- material form. The under listed are among the few we wish to recognize;

- ❖ Mambrui Muslim Community
- ❖ Mambrui Primary School Old student
- ❖ Sheikh Ali Bashamakh
- ❖ Sheikh Ali Abdalla Bakhshuwein
- ❖ Sheikh Mohamed Bin Ali And Brothers
- ❖ Marhum Sheikh Muhamed Bin Ali Alamoody
- ❖ Hon Abdulswamad Shariff Nassir.



## COLLABORATORS

- a) Tawfiq Hospital
- b) Mombasa Maize Millers
- c) Afya International Hospital
- d) Kilifi County Government
- e) Kenya Muslim Community
- f) Kitui Flour Millers



**MAMBRUI SECONDARY SCHOOL EDUCATION TRUST**  
**SCHEDULE OF OPERATING INCOME & EXPENDITURES**  
**FOR THE YEAR ENDED 31ST DECEMBER 2024**

<b>Establishment Income</b>		
Tuition Fee		13,904,061.00
Boarding Fees		3,191,000.00
School Report Book		195,100.00
School Id Card		8,000.00
Computers fees and Maintenance		362,550.00
School Badges		71,250.00
School Uniforms		207,300.00
T.Shirts		34,130.00
Educational trips		373,000.00
Educational trips		
<b>Total Income</b>		<b>18,346,391.00</b>
<b>Expense</b>		
Salaries and Wages		11,845,143.00
Depreciation		1,348,045.00
Boarding Expenses		4,776,405.00
Repairs & Maintenance		395,758.00
Motor Vehicles Expenses		546,882.00
Office Exepenses		55,120.00
Utilities		310,315.00
Stationeries		320,398.00
Donations		163,469.00
Audit Fees		58,000.00
Telephone		26,109.00
Travelling & Entertainment		29,450.00
Laboratory Supplies		282,718.00
Medical Expenses		10,800.00
Insurance		111,592.00
Bank Charges		3,361.00
<b>Total Exepnses</b>		<b>20,283,565.00</b>
<b>Net Loss</b>		<b>(1,937,174.00)</b>



# **MAMBRUI SECONDARY SCHOOL EDUCATION TRUST**